

Traffic study of the seafront crossroads functioning in Ajaccio, during the phase of work

The city of Ajaccio asked for CeRyX Traffic System to realize a traffic study as part of the works for the seafront outlets. The goal of the study was to improve traffic flow, and had to provide ideas of new traffic light crossroad functioning – especially on the castelvechio intersection.

PROJECT DETAILS AND BACKGROUND

The works took place between the Marechal Juin and the Castelvechio crossroads, which connect the "boulevard Bonaparte" and the "cours Jean Nicoli". Because of the outlets works, it was needed to close the opposite direction road in "cours Nicoli" even though it connected the Lyautey crossroad and served the two housing areas "Cannes" and "Les Salines".

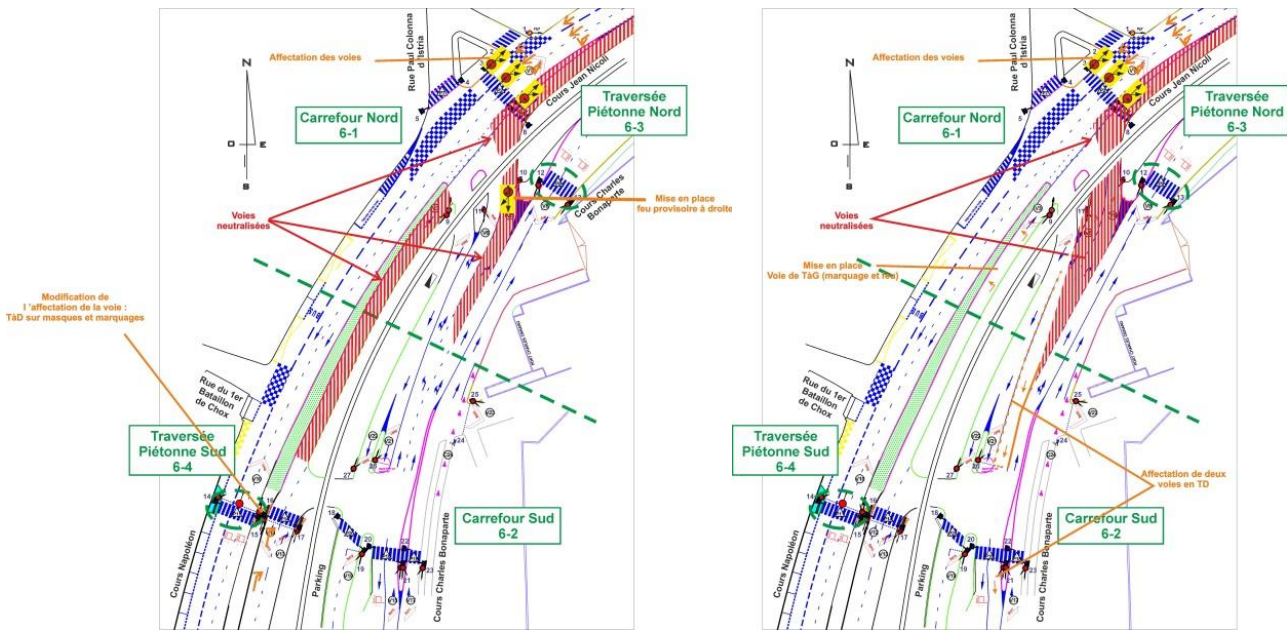


CeRyX Traffic System proposed several functioning scenario for the Castelvechio crossroad, and estimated the deviated traffic induced on the seafront crossroads and related ones.

ANALYSIS AND METHODOLOGY

CeRyX Traffic System defined 3 deviated traffic scenario, each one related to potential urban design for the Castelvechio crossroad. CeRyX Traffic System checked the different crossroads functioning impacted by the deviated traffic, and proposed if necessary, better functioning to absorb the additional traffic.

Following, two different scenario for the Castelvechio crossroad, with urban design proposals:



Measurements, of crossroads capacities impacted by the deviated traffic, have been realized. These calculations shew that some scenario, related to the Castelvechio crossroad functioning, created traffic disorders on other crossroads, not included in the study.

SOLUTIONS DELIVERED

At the end of the mission, CeRyX Traffic System was able to give the final schemes of the considered crossroads, with new urban design and traffic light functioning (modifications of road markings, new traffic light installation, essential to respect the rules).

The simplifications of the connected junctions, related to the selected urban design scenario of the Castelvechio crossroad, have been executed between the crossroads Lyautey and Castelvechio. That permits a better control of the traffic at the entrance of town.